



Accessories and spares





Accessories and spares

Accessories and spares

eibe Spare Parts and Accessories

Keep your playgrounds in working order with **eibe**! Detailed guidelines for the responsible playground operators for the maintenance and care of playgrounds are stipulated in the **EN 1176-7**.

In order to make it easier to comply with these regulations, **eibe** offers a comprehensive range of accessories and spare parts.

The **eibe** after-sales service guarantee: we provide you with a 10-year guarantee to purchase replacement parts from



eibe for the **eibe** play equipment. This is because safety can only be assured with original replacement parts.

Should a required replacement part not be listed, then ask **eibe**. We will be happy to help you!

An Overview of Materials:

- Hot-dip galvanised steel: corrosion-resistant layer of the metal parts with and without powder coating.
- High quality polyester plastics (PE).
- Stainless steel (V2A): non-corrosive steel with chrome and nickel alloy.

- Medium density fibreboard (MDF): special laminated fibreboard for external areas.
- Laminated wood: multi-layered laminated solid wood.
- Nets: cables and nets are made of Hercules cable, i.e. a quadruple steel inlay that is securely coated with polypropylene and has extremely good anti-abrasion properties.
- Ash: coarse-thread, elastic hardwood.
- High pressure laminate (HPL): durable, highly scratch-resistant laminate.

- Decored, pressure impregnated wood in accordance with  : first-grade timber with a 10-year guarantee against rotting and fungus.
- Grey cast iron: cast iron material with special ferro-silicon metal alloy.
- Rubber: natural rubber-based elastic material.
- Steel cable: multi-layered, non-rotational, galvanised, rounded cable.

For a detailed overview of materials, see from page 540.



eibe Spare parts spring rockers	from page 528
eibe Spare parts climbing and swinging	from page 529
eibe Spare part ready-made foundation	from page 534
eibe Spare parts other articles, aerial cableways	from page 535
eibe Spare parts and accessories acqua	from page 536
eibe Palisades	from page 537
eibe Test specimen kit	from page 538
eibe Wood preservation, glazes	from page 539



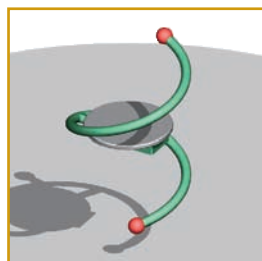
Accessories and spares



5 67 028 0
elbe Butterfly without Spring
see page 528



5 67 029 0
elbe Little Beetle without Spr.
see page 528



5 67 030 0
elbe Snake without Spring
see page 528



5 67 114 0
elbe Flight of the Bumble Bee
without Spring
see page 528



5 67 115 0
elbe Beetle Ride Without Spring
see page 528



5 55 248 0
Double see-saw, grasshopper,
w/o spring
see page 528



5 55 251 0
Spring rocker for four, Beetle
Quartet w/o spring
see page 528



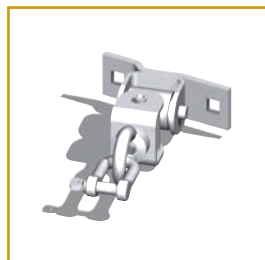
5 63 235 0
elbe cable for circular plate 170
cm, with steel core, d=18 mm
230 cm see page 529



5 63 001 0
elbe Knotted Rope 170 cm with
steel inlay, d = 24 mm
260 cm see page 529



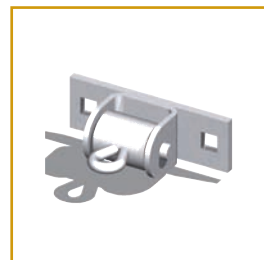
5 63 237 0
elbe swing ladder, armored
rope, 170 cm
230 cm see page 529



4 35 103 0
elbe basis Universal Joint
see page 530



5 63 038 0
elbe basis Screw Link
see page 530



5 63 011 0
elbe basis Swing Suspension
see page 530



5 63 037 0
elbe Fine-Link Chain
see page 530



5 51 813 0
elbe Stainless Steel Swing Axle
see page 530



5 51 820 0
elbe Multiple-Point Suspension
Made of Stainless Steel
see page 530



5 51 823 0
elbe Single-Point Suspension,
45° Made of Stainless Steel
see page 530



5 63 203 0
elbe basis Safety Swing Seat
for Small Children
see page 531



5 63 207 0
elbe basis Safety Swing Seat
see page 531



Accessories and spares

Accessories and spares



5 63 204 0

elbe basis Safety Swing Seat,
Broad

see page 531



5 55 057 0

elbe Tyre Swing Seat

see page 531



5 55 048 0

elbe basis Nest Seat Ø120 cm,
Woven Rubber

see page 532



5 55 052 0

elbe basis Nest Seat Ø100 cm,
Woven Cable

see page 532



5 63 226 0

elbe basis Swing Chair

see page 532



5 63 225 0

elbe basis Swing Rope

see page 532



5 63 070 0

Prefabricated Foundation

see page 534



5 63 039 0

elbe Climbing Net made of
Fine-Link Chain

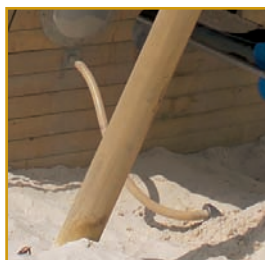
see page 534



5 63 041 0

elbe Climbing Net made of
Polyester-Coated Steel Cable

see page 534



5 66 353 0

elbe Sampler

see page 534



5 66 351 0

elbe Depth Gauge

see page 534



5 66 354 0

elbe Rotating Portholes filled
with Water and Fish

see page 534



5 66 352 0

elbe Voicepipe

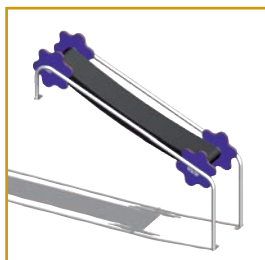
see page 534



5 66 357 0

elbe Periscope

see page 534



5 65 790 0

elbe Conveyor Belt

see page 535



5 66 178 0

elbe Telescope

see page 535

eibe

525.



Accessories and spares



5 55 069 0

elbe Track Cable for Cableway System

see page 535



5 55 065 0

elbe Track Cable for Cableway System

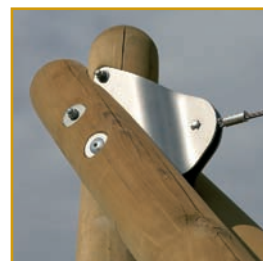
see page 535



5 55 066 0

elbe Stop Spring with Buffer

see page 535



5 55 280 0

Rope anchor Sierra/Montana

see page 535



5 55 281 0

Rope tensioning device Sierra/Montana

see page 535



5 55 073 0

elbe Cableway Travelling Carriage for all Cableway Systems

see page 535



5 55 076 0

elbe Pendulum Seat, length: 180 cm

200 cm see page 535



K 59 407 0

elbe Pump Body

see page 536



K 59 406 0

elbe Swipe Shaft

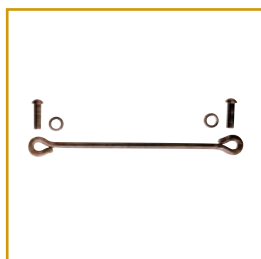
see page 536



K 59 405 0

elbe Pump Swipe

see page 536



K 59 404 0

elbe Piston Rod

see page 536



K 59 403 0

elbe Air Globe

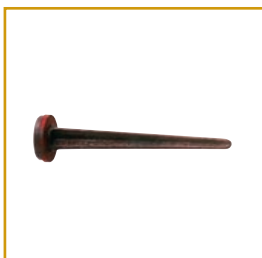
see page 536



K 59 409 0

elbe Valve Seat

see page 536



K 59 410 0

elbe Plunge Valve

see page 536



K 59 408 0

elbe Piston with Collar

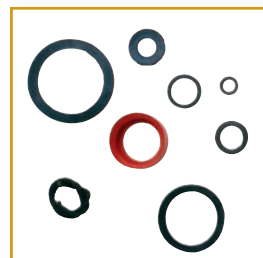
see page 536



K 59 402 0

elbe Internal Lever

see page 536



K 59 401 0

elbe Set of Gaskets

see page 536



5 57 049 05 57 049 0

elbe Pump Foot

see page 536



M 50 083 0

elbe Valve Combination

see page 536

**5 57 204 0****elbe acqua Water and Sand Wheel**

see page 537

**E 56 630 81****elbe Operating Switch, solo**

see page 537

**5 45 519 0****elbe playo Sand Silo**

see page 537

**5 45 507 0****elbe playo Sieve, Coarse**

see page 537

Accessories and spares

**5 59 239 0****elbe Sand Sieve**

see page 537

**5 57 203 0****elbe acqua Wooden Channel**

see page 537

**5 66 171 0****elbe acqua Water and Sand Seesaw Wooden Channel**

see page 537

**E 56 630 82****elbe Base Plate, Complete**

see page 537

**5 55 528 0****elbe Fencing and Barriers**

see page 537

**5 55 530 0****elbe Fencing and Barriers**

see page 537

**5 63 084 0****for size M8**

Other sizes see page 538

**5 63 080 0****for size M8**

Other sizes see page 538

**5 63 094 0****elbe Hexagonal Screw Spanner with Hole for size M8, apiece**

see page 538

**5 63 095 0****elbe Bit for Hole for Hexagonal Socket Screws for drilling machines, apiece**

see page 538

**5 63 213 0****Sleeve Nut for Net Attachment**

see page 538

**5 63 065 0****elbe Test Specimen Kit for Play Equipment in accordance with EN1176**

see page 538

**5 63 052 10****elbe playo Wooden Glazes, 2,5 litres, Yellow**

see page 539

**5 63 056 01****elbe Wood Paint**

see page 539

**5 63 036 0****elbe Repair Kits, Laminate**

see page 539

**5 63 035 0****elbe Repair Kits, Surface RAL 2002**

see page 539

eibe

Accessories and spares

elbe basis Spring Rocker Animals made of Steel Tube

Powder-coated, with maintenance-free solid polyester seats.

New: seating

surfaces and middle sections uni red, green, blue.



5 67 028 0

elbe Butterfly without Spring

Scope of delivery / material data:

1 spring rocker animal body butterfly: powder-coated steel, PE

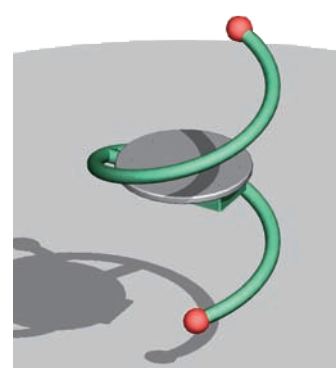


5 67 029 0

elbe Little Beetle without Spr.

Scope of delivery / material data:

1 spring rocker animal body little beetle: powder-coated steel, PE



5 67 036 0

Snake with Protruding Head without Springs

Scope of delivery / material data:

1 spring rocker animal body snake: powder-coated steel, PE.



5 67 114 0

elbe Flight of the Bumble Bee without Spring

Scope of delivery / material data:

1 spring rocker animal body bumble bee: powder-coated steel, PE



5 67 115 0

elbe Beetle Ride Without Spring

Scope of delivery / material data:

1 spring rocker animal body beetle ride: powder-coated steel, PE



5 55 248 0

Double see-saw, grasshopper, w/o spring

Scope of delivery / material data:

1 frame: hot-dip galvanized and powdered steel
2 seat areas: PE



5 55 251 0


Spring rocker for four, Beetle Quartet w/o spring

Scope of delivery / material data:

1 spring rocker animal body: hot-dip galvanized and powder-coated steel

4 seat areas: HPL

Accessories and spares

	5 62 050 0 Aggressions- handschuh	5 67 113 0 Flying beetle	5 67 018 0 Butterfly 5 67 112 0 Flying bumblebee	5 59 007 0 Skipping flower	Spring rocker animals with laminated wood bodies, from 1998 5 59 077 0 Safari jeep 5 55 306 5 Balancing trainer 5 59 150 0 Jumbo 5 67 108 0 Dolphins and whales	Spring-rocker animals with laminated wood bodies, pre-1998 5 59 155 0 Spring rocker, 3-seater 5 67 122 0 Sand float	Stainless steel spring rockers	Spring rockers with PE bodies	Spring rockers with PE boards
M 53 033 0 Ø wire 15mm with head and foot plate	X								
M 53 083 0 Ø wire 25mm with head and foot plate		X							
M 53 080 0 Ø wire 19mm with head and foot plate			X						
M 53 081 0 Ø wire 19mm with head and foot plate					X				
M 53 024 0 Ø wire 21mm with head and foot plate						X			
K 50 264 0 Ø wire 20mm with head and foot disk							X	X	X
M 53 027 0 Ø wire 10.5mm				X					
5 59 160 0 elbe Concrete Foundation for elbe basis	X	X	X		X	X			
5 63 210 0 Ground Anchor for elbe basis Spring	X	X	X		X	X			
5 63 228 0 Ground Anchor for elbe basis Spring							X	X	X
5 63 212 0 adaptor for spring rockers Øwire 21 mm*						X			

* By means of this adapter, you may mount our spring rocker animal bodies to fully operative springs with a wire diameter of 21 mm from our older spring rockers (pre-1998)



elbe Hercules Cable Knotted Rope

Suitable for 200 cm climbing frame.

5 63 001 0

**elbe Knotted Rope 170 cm with steel
inlay, d = 24 mm**

Scope of delivery / material data:

1 knotted rope 170 cm: poly.-coated steel cable

Suitable for 260 cm climbing frame.

5 63 002 0

**elbe Knotted Rope 230 cm with steel
inlay, d = 24 mm**

Scope of delivery / material data:

1 knotted rope 230 cm: poly.-coated steel cable



elbe cable for circular plate, made from armored rope

Suitable for 200 cm climbing frame.

5 63 235 0

**elbe cable for circular plate 170 cm,
with steel core, d=18 mm**

Scope of delivery / material data:

1 cable for circular plate 170 cm: polyester-coated
steel cable, plastic

Suitable for 260 cm climbing frame.

5 63 236 0

**elbe cable for circular plate 230 cm,
with steel core, d=18 mm**

Scope of delivery / material data:

1 cable for circular plate 230 cm:
polyester-coated steel cable, plastic



elbe swing ladder, armored rope

5 63 237 0

**elbe swing ladder, armored rope,
170 cm**

Scope of delivery / material data:

1 swing ladder 170 cm:
Rubber, polyester-coated steel cable

Suitable for 260 cm climbing frame.

5 63 238 0

**elbe swing ladder, armored rope,
230 cm**

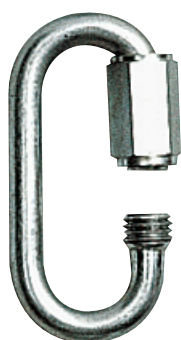
Scope of delivery / material data:

1 swing ladder 230 cm:
Rubber, polyester-coated steel cable

elbe

529.

Accessories and spares



elbe basis Screw Link

For attaching the chain suspension devices of swing seats please use 2 screw links.

5 63 038 0

elbe basis Screw Link

Scope of delivery / material data:

1 screw link: hot-dip galvanised steel



elbe Fine-Link Chain

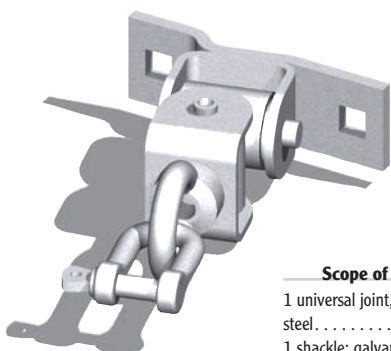
running metre

5 63 037 0

elbe Fine-Link Chain

Scope of delivery / material data:

1 m fine-link chain: hot-dip galvanised steel



elbe basis Universal Joint

Because the bearing housing is welded cross-wise, the maintenance-free universal joint, which has galvanised surfaces, allows an oscillating swinging movement. The polyamide bearing bushes are fixed to a stainless steel axle.

4 35 103 0

elbe basis Universal Joint

Scope of delivery / material data:

1 universal joint, including screws: galvanised steel

1 shackle: galvanised steel

5 63 214 0

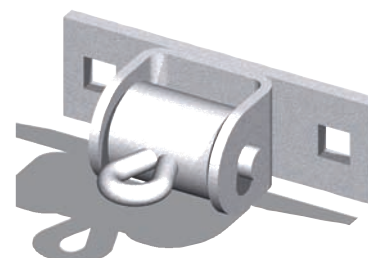
elbe Universal Joint/Safety Chain for Universal Joint

Scope of delivery / material data:

1 angle: galvanised steel

0.1 m fine-link chain: galvanised steel

1 screw link: electrogalvanised



elbe basis Swing Suspension

This version is furnished with a maintenance-free polyester slide bearing. The **elbe basis** Swing Suspension is galvanised and fixed with two screws. Two **elbe basis** swing suspension devices are required for the hanging of one swing seat.

5 63 011 0

elbe basis Swing Suspension

Scope of delivery / material data:

1 swing suspension: galvanised steel



elbe Stainless Steel Swing Axle

Length: 580 mm
Shaft diameter: 20 mm

5 51 813 0

elbe Stainless Steel Swing Axle

Scope of delivery / material data:

1 swing axle: stainless steel



elbe Multiple-Point Suspension Made of Stainless Steel

For four chains, with connection plate.

5 51 820 0

elbe Multiple-Point Suspension Made of Stainless Steel

Scope of delivery / material data:

1 multiple-point suspension with connection plate: stainless steel



elbe Single-Point Suspension, 45° Made of Stainless Steel

For chains up to 18 mm, with M12 threaded bolts and 2 half-shells.

5 51 823 0

elbe Single-Point Suspension, 45° Made of Stainless Steel

Scope of delivery / material data:

1 suspension including M12 threaded bolts and 2 half-shells: stainless steel



Free of PAH!
(polycyclic aromatic hydrocarbons)

eibe basis Safety Swing Seat

The **eibe basis** Safety Swing Seat is ergonomically designed, UV-resistant and weatherproof.

Infobox:

Seat area: 43x15 cm
Guaranteed safety: 

5 63 207 0

eibe basis Safety Swing Seat

Scope of delivery / material data:

1 safety swing seat with fine-link chains: hot-dip galvanised steel, rubber
2 screw links: galvanised steel

5 63 208 0

eibe basis Safety Swing Seat

Scope of delivery / material data:

1 safety swing seat with 4 eye rings: hot-dip galvanised steel, rubber

5 63 205 0

eibe basis Safety Swing Seat

Scope of delivery / material data:

1 safety swing seat: rubber



eibe basis Safety Swing Seat for Small Children

The **eibe basis** Safety Swing Seat for small children is very stable and has an impact protection frame all around the edge. Suitable for all swings.

Infobox:

Seat height: 22 cm
Seat area: 44x24x3.5 cm

Guaranteed safety:



5 63 203 0

eibe basis Safety Swing Seat for Small Children

Accessories and spares

Accessories and spares




Free

eibe basis Safety Swing Seat, Broad

The Broad Safety Swing Seat is suitable for all swing types.

Infobox:

Seat area: 44x24x3.5 cm
Guaranteed safety: 

5 63 204 0

eibe basis Safety Swing Seat, Broad

Scope of delivery / material data:

1 safety swing seat with fine-link chains: hot-dip galvanised steel, rubber
2 screw links: galvanised steel

5 63 198 0

eibe basis Safety Swing Seat, Broad

Scope of delivery / material data:

1 safety swing seat with 4 eye rings: hot-dip galvanised steel, rubber

5 63 199 0

eibe basis Safety Swing Seat, Broad

Scope of delivery / material data:

1 safety swing seat: rubber



eibe Tyre Swing Seat

A swing seat combined with a surface-treated rubber tyre. Conical suspension, galvanised safety fine-link chains approx. 190 cm long.

5 55 057 0

eibe Tyre Swing Seat

eibe

531.



Accessories and spares

elbe basis Swing Chair

Using the jungle rope, the children will feel as if they were deep in the jungle amongst the lianas. Please order two additional swing joints and screw links as suspension devices. The seat can for example be attached to the **elbe basis Eagle 2** double swing. Suspension height: 250 cm.

5 63 226 0

elbe basis Swing Chair

Scope of delivery / material data:

1 swing chair: galvanised steel, polyester-coated steel cable, rubber.



elbe basis Swing Rope

Cooperative interaction amongst one another is promoted here.

Please order four additional universal joints and four screw links for the suspension.

The swing rope can be attached, for example, to the **elbe basis Eagle 2** Dou-

ble Swing. (5550635, 5550630).

5 63 225 0

elbe basis Swing Rope

Scope of delivery / material data:

1 swing rope: polyester-coated steel cable (PP-Fentex).

elbe basis Nest seat, inter-laced ropes

Infobox:

Age range: 3 years and up
Minimum space: 800x225x325 cm
Free falling height: 190 cm
Largest section: Ø100x10 cm
Heaviest section: 12 kg
Replacement parts: available
Foundations:
Assembly: 2 persons/0,25 h
Ground constitution D: at least sand
Ground const. except D: at least sand
Guaranteed safety: TÜV GS
Impact protection net: 18 m²

5 55 052 0

elbe basis Nest Seat Ø100 cm, Woven Cable

5 55 627 0

elbe basis Nest seat Ø 120 cm, braided cable

Scope of delivery / material data:

1 nest seat: galvanised steel, polyester-coated steel cable



elbe basis Nest Seat Ø120 cm, Woven Rubber

Infobox:

Age range: 3 years and up
Minimum space: 800x250x325 cm
Free falling height: 203 cm
Largest section: ca. Ø124x15 cm
Heaviest section: 32 kg
Replacement parts: available
Foundations:
Assembly: 2 people/0.3 h
Ground constitution D: at least sand
Ground const. except D: at least sand
Guaranteed safety: TÜV GS
Impact protection net: 20 m²

5 55 048 0

elbe basis Nest Seat Ø120 cm, Woven Rubber

Scope of delivery / material data:

1 nest seat: galvanised steel, polyester-coated steel cable, PE





Accessories and spares

Accessories and spares

New

Free


New

New

Toddler swing seat Color

The seat swing Color for small children has an especially high rim and attractive colours. It is made from armoured rope and easy to grip for small hands.

Infobox:

Age range: from 1 year of age
Guaranteed safety: 

5 63 195 0

Toddler swing seat Color

Scope of delivery / material data:


1 swing seat; polyester-coated steel rope



Toddler swing cradle Color

The toddler's swing consists of reinforced rope.

Infobox:

Age range: from 1 year of age
Guaranteed safety: 

5 63 194 0

Toddler swing cradle Color

Scope of delivery / material data:

1 swing couch; polyester-coated steel rope




eibe basis circular swing Color

The circular swing with the coloured armoured rope makes swinging a new experience.

The frame is made of an aluminium ring wrapped with a plastic-coated steel rope; the seat is a screenprint board.

Infobox:

Age range: 6 years and up
Guaranteed safety: 

5 63 193 0

eibe basis circular swing Color

Scope of delivery / material data:

1 circular swing; aluminium, screen printing plate, polyester-coated steel rope
Jointed swing hook with stainless steel shackle

eibe

533.



Accessories and spares

eibe Rotating Portholes Filled with Water and Fish

Right to change design without notice reserved

5 66 354 0

eibe Rotating Portholes filled with Water and Fish



eibe Sampler

5 66 353 0

eibe Sampler

Scope of delivery / material data:

1 sampler: stainless steel



eibe Depth Gauge

5 66 351 0

eibe Depth Gauge

Scope of delivery / material data:

1 depth gauge: Hexaflor



① **eibe** Voicepipe

For **eibe** tema Nautilus

5 66 352 0

eibe Voicepipe

Scope of delivery / material data:

1 voicepipe: powdered metal

② **eibe** Periscope

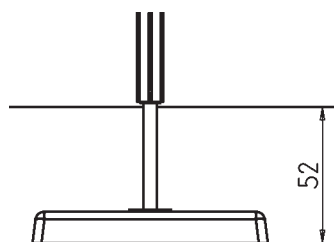
For **eibe** tema Nautilus

5 66 357 0

eibe Periscope

Scope of delivery / material data:

1 periscope: stainless steel



Prefabricated foundation

eibe prefabricated foundations only have to be buried in the ground. There is no need to transport materials to the site, nor to mix concrete or wait for foundations cast on-site to dry out. Levelling is easy – simply lower the **eibe** foundation into the ground or backfill it. **eibe** prefabricated foundations are fitted with mounting rails so that there is no need for the time-consuming drilling of dowel holes. **eibe** prefabricated foundations are rounded off all around the upper edge, minimising the risk of injury through exposed foundations. **eibe** prefabricated foundations are buried to a depth of 52 cm for colorino systems.

The Main Advantages of **eibe** Prefabri-

cated Foundations

- 1.Reduced earth excavation
- 2.No waiting time for concrete to set
- 3.Independent of weather conditions
- 4.Easy levelling
- 5.Mounting rails allows greater flexibility when installing upright posts
- 6.Quick and easy installation
- 7.Complies with **EN 1176**

5 63 070 0

Prefabricated Foundation

Scope of delivery / material data:

- 1 foundation with built-in mounting rail
- 90x20x12 cm (LxWxH)
- 2 galvanised hammerhead screws, M 10x30.
- Weight: 48 kg.

5 63 073 0

Prefabricated foundation plate

Scope of delivery / material data:

- 1 ready-made foundation plate 90x120x15 cm (without mounting rail)



eibe Climbing Net made of Fine-Link Chain

The nests consists of hot-dip galvanised fine-link chains. Please order sleeve nuts separately. The opening width of the chain links is 6 mm and therefore complies with the requirements of **EN 1176**.

5 63 039 0

eibe Climbing Net made of Fine-Link Chain

Scope of delivery / material data:

- 1 m² climbing net: hot-dip galvanised steel.



eibe Climbing Net made of Polyester-Coated Steel Cable

The nests consists of red, multiple thread, polyester-coated steel cables with a thickness of 16 mm.

Please order sleeve nuts separately.

5 63 041 0

eibe Climbing Net made of Polyester-Coated Steel Cable

Scope of delivery / material data:

- 1 m² climbing net: polyester-coated steel cable

5 63 213 0

Sleeve Nut for Net Attachment

Scope of delivery / material data:

- 1 sleeve nut M10: electrogalvanised steel
- 1 distance role: PA



eibe Conveyor Belt

The Conveyor Belt is completely safe. The belt itself consists of a textile-reinforced rubber material. It is easy-running and moved using hand wheels.

5 65 790 0

eibe Conveyor Belt

Scope of delivery / material data:

1 conveyor belt: stainless, rubber, HPL



Pendulum seat

Seat – Ø25 cm.

5 55 076 0

eibe Pendulum Seat, length: 180 cm

Scope of delivery / material data:

1 pendulum seat L = 180 cm: hot-dip galvanised

steel, rubber

5 55 075 0

eibe Pendulum Seat, length: 200 cm

Scope of delivery / material data:

1 pendulum seat L = 200 cm: hot-dip galvanised steel, rubber

5 55 066 0

eibe Stop Spring with Buffer

Scope of delivery / material data:

1 stop spring with buffer: spring steel



eibe Telescope

For installation in playo, colorino and ibondo play systems.

5 66 178 0

eibe Telescope

Scope of delivery / material data:

1 telescope: PVC
1 foundation plate: PE



5 55 069 0

eibe Track Cable for Cableway System

Scope of delivery / material data:

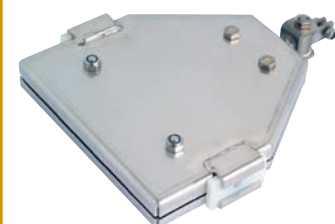
1 m track cable: steel cable

5 55 065 0

eibe Track Cable for Cableway System

Scope of delivery / material data:

21 m track cable: steel cable



eibe Cableway Travelling Carriage for all Cableway Systems

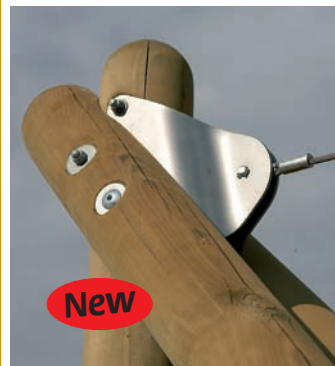
TÜV-certified, 38 x 30 cm (W x H)

5 55 073 0

eibe Cableway Travelling Carriage for all Cableway Systems

Scope of delivery / material data:

1 cableway travelling carriage: stainless steel . . .



5 55 280 0

Rope anchor Sierra/Montana

Scope of delivery / material data:

1 cable bolt: galvanized steel



5 55 281 0

Rope tensioning device Sierra/Montana

Scope of delivery / material data:

1 cable tensioning device: galvanized steel

eibe

535.

Accessories and spares

Spare Parts for elbe Suction and Pressure Pumps

① K 59 407 0

elbe Pump Body

Scope of delivery / material data:

1 pump body: grey cast iron

② K 59 403 0

elbe Air Globe

Scope of delivery / material data:

1 air globe: grey cast iron

③ K 59 409 0

elbe Valve Seat

Scope of delivery / material data:

1 valve seat: grey cast iron

④ K 59 405 0

elbe Swipe Shaft

Scope of delivery / material data:

1 pump swipe: grey cast iron

⑤ K 59 402 0

Scope of delivery / material data:

1 internal lever: grey cast iron



K 59 406 0

elbe Swipe Shaft

Scope of delivery / material data:

1 swipe shaft: steel



K 59 410 0

elbe Plunge Valve / elbe Piston Rod

Scope of delivery / material data:

1 plunge valve: grey cast iron

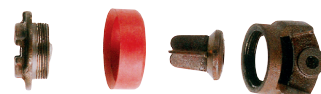


K 59 404 0

elbe Piston Rod

Scope of delivery / material data:

1 piston rod: grey cast iron

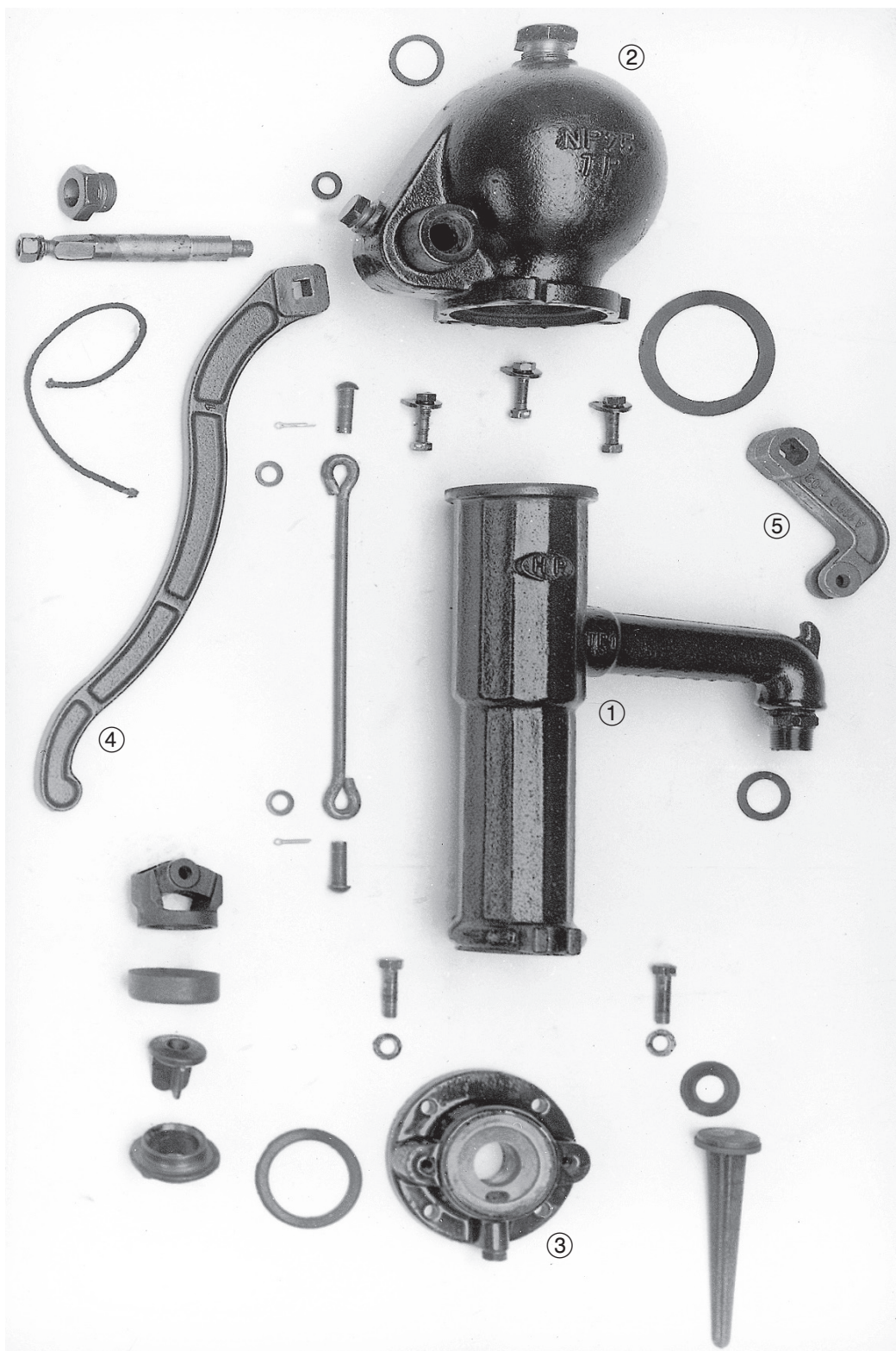


K 59 404 0

elbe Piston Rod

Scope of delivery / material data:

1 piston with collar: grey cast iron, rubber

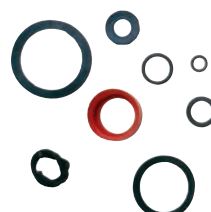


M 50 083 0

elbe Valve Combination

Scope of delivery / material data:

1 manometer
1 pressure reducer

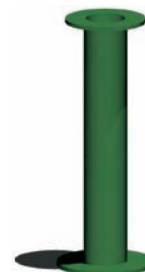


K 59 401 0

elbe Set of Gaskets

Scope of delivery / material data:

1 set of gaskets: rubber

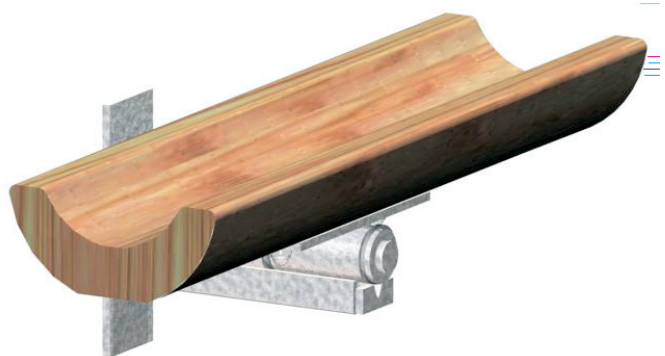


5 57 049 0

elbe Pump Foot

Scope of delivery / material data:

1 pump foot: grey cast iron

**5 66 171 0****elbe acqua Water and Sand Seesaw
Wooden Channel****Scope of delivery / material data:**1 water tilting chute: pressure impregnated pine,
galvanised steel**5 57 203 0****elbe acqua Wooden Channel****Scope of delivery / material data:**

1 wooden channel: pressure impregnated pine

5 57 205 0**elbe acqua Fastening Angle for Wooden
Channel****Scope of delivery / material data:**

1 fixing angle: galvanised and powdered steel

**elbe Fencing and Barriers**With a diameter of 14 cm and a length
of 140 cm. The burial depth is approx.
40 cm.**5 55 528 0****elbe Fencing and Barriers****5 55 528 0****elbe Fencing and Barriers****E 56 630 81****elbe Operating Switch, solo****Scope of delivery / material data:**

1 operating switch: stainless steel

**5 45 519 0****elbe playo Sand Silo****Scope of delivery / material data:**

1 sand silo: stainless steel

**5 59 239 0****elbe Sand Sieve****Scope of delivery / material data:**

1 sand sieve: stainless steel

**5 45 507 0****elbe playo Sieve, Coarse****Scope of delivery / material data:**

1 sand sieve: stainless steel

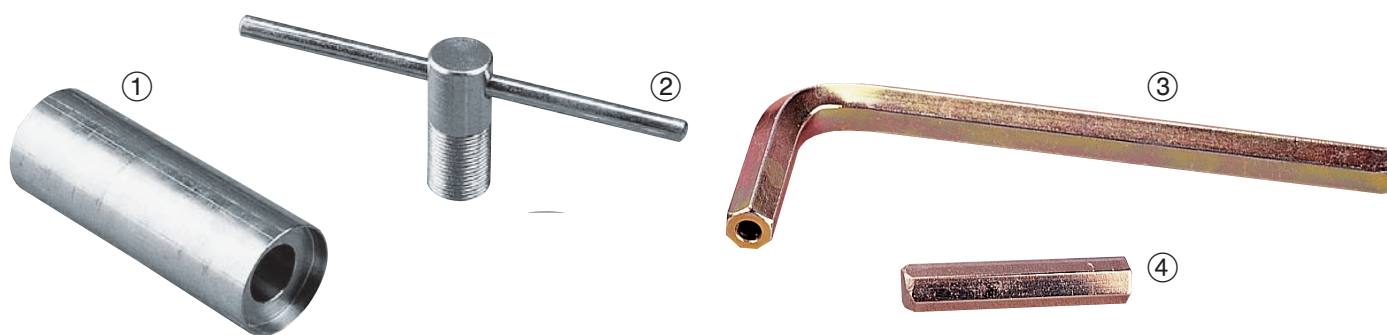
**5 57 204 0****elbe acqua Water and Sand Wheel****Scope of delivery / material data:**

1 water and sand wheel: PP

**elbe Base Plate, Complete**With operating switch and self-closing
valve. The water tap or the broad-jet
shower can be mounted onto the base
plate.When the foot button is operated, the
mechanism of the self-closing valve is
activated. The water only comes out
after the operating switch is released,
with the advantage that the device
cannot be used incorrectly (reduction
of water consumption). The amount
of water flowing can be adjusted to 4
different levels.**E 56 630 82****elbe Base Plate, Complete****Scope of delivery / material data:**1 ground plate: stainless steel
1 operating switch: stainless steel
1 self-closing valve: stainless steel**E 56 630 80****elbe Self-Closing Valve, solo****Scope of delivery / material data:**

1 self-closing valve: stainless steel

Accessories and spares



① Assembly Punch, a piece

5 63 084 0

for size M8

5 63 085 0

for size M10

5 63 086 0

for size M12

5 63 087 0

for size M16

② Spanner, a piece

5 63 080 0

for size M8

5 63 081 0

for size M10

5 63 082 0

for size M12

5 63 083 0

for size M16

③ Hexagonal Screw Spanner with Hole

5 63 094 0

elbe Hexagonal Screw Spanner with Hole for size M8, a piece

④ Bit for Hole for Hexagonal Socket Screws

5 63 095 0

elbe Bit for Hole for Hexagonal Socket Screws for drilling machines, a piece
Sleeve Nut for Net Attachment

for net attachment

5 63 213 0

Sleeve Nut for Net Attachment

Upgrade Tool

For upgrading with sleeve nuts, e.g. for net equipment, you can order M12 x 60 or M10 x 60 with security pin and the corresponding tool.



elbe Test Specimen Kit for Play Equipment in accordance with EN 1176

With this test case you are ideally equipped for all maintenance and inspection work on the playground equipment. It contains all the test specimens required by **EN 1176** as well as a large number of useful accessories.

The whole kit is easy to handle and comes conveniently packed in a robust polyester case.

Pictured test kit similar to original. 5 63 065 0

elbe Test Specimen Kit for Play Equipment in accordance with EN 1176

Scope of delivery / material data:

4 test specimens for inspection according to **EN 1176** part 1, section D.2.1.....
1 test device for places where head and throat can become trapped according to **EN 1176** part 1, section D.2.2.....
1 test device for places where clothing can become trapped according to **EN 1176** part 1, section D.3.1.....
3 test specimens for places where fingers can

become trapped according to **EN 1176** part 1, sections D.4.1. and C.2.2.10 m tape measure...
Spring balance up to 20 kg
Spirit level with angle display
elbe rotating disc for calculating the falling space
Detailed instructions for use, with information on the use of the test devices



eibe playo Wood Glaze

A low-odour fast-drying, easy to apply wood glaze on a dispersion base. Extremely fine pigments guarantee transparent colouration and protection against harmful UV-radiation.

2,5 L:

5 63 052 10

eibe playo Wooden Glazes, 2.5 litres, Yellow

5 63 052 40

eibe playo Wooden Glazes, 2.5 litres, Blue

5 63 052 50

eibe playo Wooden Glazes, 2.5 litres, Green

5 63 052 60

eibe playo Wooden Glazes, 2.5 litres, Brown

The coating is permanently elastic and protects against the weather. Corresponds to DIN 68861-1. Ideal for play equipment. For protective and decorative coatings on almost all types of wood.

5 L:

5 63 053 10

eibe playo Wooden Glazes, 5 litres, Yellow

5 63 053 40

eibe playo Wooden Glazes, 5 litres, Blue

5 63 053 50

eibe playo Wooden Glazes, 5 litres, Green

5 63 053 60

eibe playo Wooden Glazes, 5 litres, Brown

eibe Wood Protective Primer

A ready-to-use, water-based Wood Protective Primer. Protects wood in the open air against attack from blue stain and decay, in accordance with DIN 68861, Part 3. Not suitable for timbers

containing tannin, such as oak and robinia.

5 63 048 0

eibe Wood Protective Primer



eibe Wood Paint

For the painting of all timber that is intended for the outdoors. The Wood Paint bears the "Environmental Angel" symbol. This wood paint doesn't have the protective function of impregnation. Please re-paint regularly in two-year cycles and you will retain the beauty of your wood.

5 63 056 01

eibe Wood Paint

Accessories and spares

Repair Kits and Coatings

Even a GFRP slide with its excellent quality and durability can become soiled or damaged through continual heavy use and by children playing with sand and gravel.

Our Repair Kits for GFRP equipment offer you a fast, easy and inexpensive solution should such a situation occur.

With the instructions supplied with the product it is a simple task to return your slide or another piece of GFRP equipment to a safe condition.



5 63 036 0

eibe Repair Kits, Laminate

Scope of delivery / material data:

1 tin of adhesive resin, 1kg
1 tin of resin, 1kg
2 beakers

1 brush.
1 bottle of hardener, 40ml.
1 sheet of sandpaper, K60.
1 sheet of sandpaper K120
1 glass fibre mat, 1.5 m².
1 set of instructions.



5 63 035 0

eibe Repair Kits, Surface 2002

Scope of delivery / material data:

1 spray can 2002, 400ml
1 fine-filler, 240g
1 polyester cleaner, 100ml
2 sheets of sandpaper K240.
1 set of instructions.

5 63 066 0

Matterhorn Repair Set

Matterhorn Repair Set (not shown).
Scope of delivery / material data: